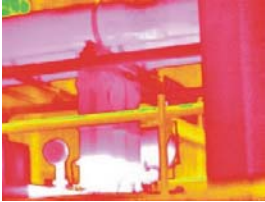


THT41, THT42 and **THT44** are hand-held infrared cameras developed in a rugged and ergonomic design, robust and shock-resistant for any working environment.



THT42 and **THT44** are featured with Infra Fusion technology to pin-point the problem exactly in high efficiency

THT41, THT42 and **THT44** are specifically designed for products predictive maintenance, electrical inspections, non-destructive testing, process control applications, quarantine inspection. security monitoring solutions, firefighting finding and rescue, building energy testing and diagnostics, veterinarian helper, etc.



1. IMAGING PERFORMANCE

	THT41	THT42	THT44
Thermal			
Detector type	UFPA		
Spectral range	8 ÷ 14 μm		
Pixels	160 x 120, 25 μm		
Sensitivity	0.1 °C @ 30°C		
Lens / FOV	11mm, 21° x 16°		
IFOV	2.27mrad		
Focusing	Auto / Manual		
Image frequency	50 Hz		50 Hz PAL / 60 Hz NTSC
Palette	4	6	8
Visual			
Built-in Digital Video	---	CMOS sensor 1600x1200 pxl (2Mpxl), 2 ²⁴ true colors	

2. IMAGING DISPLAY

	THT41	THT42	THT44
External display	3.6" TFT LCD screen		
Video output	---	PAL / NTSC	
Infra fusion	---	Visual and IR blending	
Live thermal video recording on SD card		•	
Live thermal video recording via USB	---		•
Built-in flash memory	---	•	

3. MEASUREMENT

	THT41	THT42	THT44
Temperature range	-20°C to +250°C		
Accuracy	±2%rdg or ±2°C		
Measurement modes	Hot/cold point mark and center point		
Laser pointer	---	•	
Emissivity correction	Variable from 0.01 to 1.00, on-screen		
Internal emissivity table		•	
Saving fusion image	---	•	
Alarm on temperature measurement		•	
Measurement features	Automatic correction based on distance, relative humidity, atmospheric transmission and external optics		

4. IMAGE STORAGE

	THT41	THT42	THT44
Media	Removable 2GB SD card		
File format	JPEG with analysis records		
Memory size	Up to 1000 images		
Voice annotation	---		60 s / image



5. LASER LOCATOR

	THT41	THT42	THT44
Classification type	- - -	Class 2	

6. PC CONNECTION

	THT41	THT42	THT44
USB 2.0	For image transfer	For video and image transfer	

7. POWER SYSTEM

	THT41	THT42	THT44
Battery type	AA alkaline battery or AA rechargeable battery		
Charging system	In camera or in battery charger		
Battery life	> 2 hours		
External power	AC adapter 110/220VAC, 50/60Hz		

8. ENVIRONMENT

	THT41	THT42	THT44
Operating temperature	-10°C to +50°C		
Operating humidity	10% to 95%HR		
Storage temperature	-20°C to +60°C		
Storage humidity	10% to 95%HR		
IP degree	IP54 IEC529 housing		
Shock	Operational: 25G, IEC68-2-29		
Vibration	Operational: 2G, IEC68-2-6		

9. DIMENSIONS

	THT41	THT42	THT44
Size (L x W x H)	240 x 111 x 124		
Weight	0.73 (battery included)		



จัดจำหน่ายโดย : บริษัท เฮอร์เทค จำกัด

EVERTECH CO., LTD.
 TEL: (02)8702884-5
 FAX: (02)4287771
 E-mail: sales@evertech.co.th
<http://www.evertech.co.th>
<http://www.evt.in.th>

ThermoViewPRO - GDJR-2011-05-22 233121.irv @ 423%

File Video Measure Tools View Window Help

GDJR-2011-05-22 233121.irv @ 423%

[109,60] 28.8°C

Gauge

Information

X Pos: 109
 Y Pos: 60
 Cursor Temp: 28.8°C
 Max Temp: 35.1°C
 Filter: 4
 Ambient: 33.7°C
 Emissivity: 0.98
 Humidity: 70%

Created Date: 1468/05/22
 Created Time: 11:31:21 PM
 Device Type: THT44
 Serial Number:

Image Palette

1 2 3 4 5 6 7 8 9

For Help, press F1

start | Inbox - Outlook ... | นพรัตน์ ฐาน | 2 Microsoft Ou... | ACC-BILLING # ... | THT44 | ThermoViewPRO | ThermoViewPRO... | Document2 - Mic... | EN | 11:45

ThermoViewPRO - IR000024.JPG

File Image Filter Measure Tools View Window Help

IR000024.JPG

VisPicture - IR000024.JPG

47.8°C
 45.2
 41.6
 38.0
 34.5
 30.9°C

Min
 Max
 S1
 S2
 S3

Auto

DataView

Object	Temper...	Property
Max	45.8°C	Temper.
Min	25.8°C	Temper.
S1	32.4°C	Temper.
S2	42.2°C	Temper.
S3	42.4°C	Temper.

Image Palette

1 2 3 4 5 6 7 8 9

Save file to [C:\DOCUME~1\ADMINI~1\LOCALS~1\Temp\GD2CE.bmp].

start | Inbox - Outlook Expr... | นพรัตน์ ฐาน | Tasks - Microsoft Ou... | 716 Reminders | ACC-BILLING # 2.23... | THT44 | ThermoViewPRO - IR... | EN | 11:42

ThermoViewPRO - Copy of IR000024

File Image Filter Measure Tools View Window Help

Copy of IR000024

47.8°
45.2°
41.6°
38.0°
34.5°
30.9°

Min Max D1

Auto

Image Fusion

Image Fusion Rotate Angle 0 °

VL IR

Low High

44.0°C 46.5°C

Zoom + Zoom -

VisPicture - Copy of IR000024

Image Palette

DataView

Object	Temper...	Property
Max	45.5°C	Temperature
Min	25.8°C	Temperature
D1	32.0°C	Temp-A
	45.0°C	Temp-B
	13.0°C	DeltaTemp

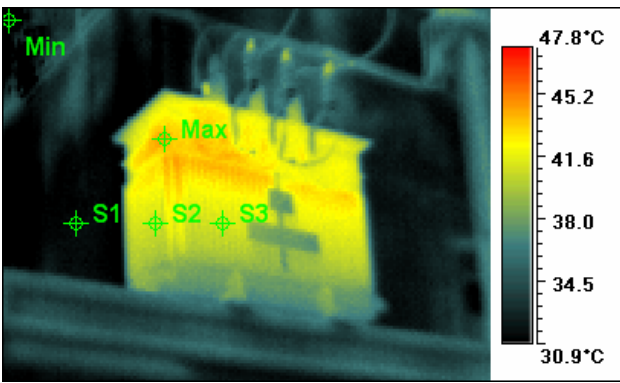

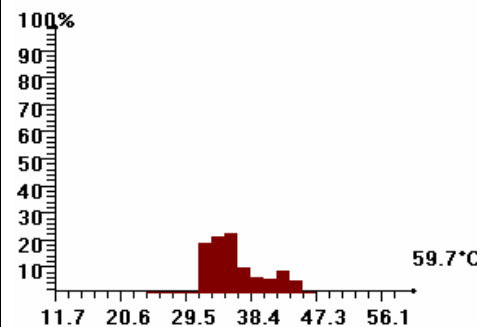
Information DataView Gauge

For Help, press F1

Save file to [X:\HT Italia\TestData\THT44\COPY of IR000024.JPG].

start Inbox - Outlook E... Tasks - Microsoft ... 987 Reminders WEB SERVICE - ... 4 Windows Expl... ThermoViewPRO ... EN 15:25

Sample

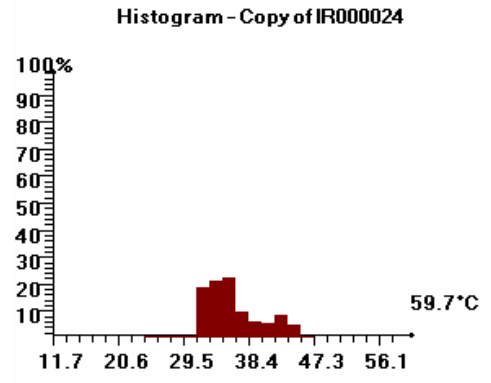
Inspected Location: (Location)			
Inspected By : (Operator)			
File Name	IR000024.JPG	Created Date	5/21/2011
Created Time	9:58:13 AM	Humidity	70%
Emissivity	0.98	Distance	10.0m
Ambient	32.0°C	Max Temp	45.8°C
Min Temp	25.8°C		
IR Image		Object Parameter	Value
		Max	45.8°C
Visible Image		Max:Emissivity	0.98
		Min	25.8°C
Component Detail		Min:Emissivity	0.98
		S1	32.4°C
		S1:Emissivity	0.98
		S2	42.2°C
		S2:Emissivity	0.98
		S3	42.4°C
		S3:Emissivity	0.98
		Histogram - IR000024.JPG 	
Recommendations:			
Repair Notes			
Type of Defect			
Found:			
Corrective Action Taken:			
Signature:			
Date:			
Gd272-t.wav			

Inspected Location: (Location)					
Inspected By : (Operator)					
File Name	Copy of IR000024	Created Date	5/21/2011	Created Time	9:58:13 AM
Emissivity	0.98	Humidity	70%	Distance	10.0m
Ambient	32.0°C	Max Temp	45.5°C	Min Temp	25.8°C

IR Image

Object Parameter	Value
Max	45.5°C
Max:Emissivity	0.98
Min	25.8°C
Min:Emissivity	0.98
D1:Temp-A	32.0°C
D1:Temp-B	45.0°C
D1:DeltaTemp	13.0°C
D1:Ratio	100.0%

Visible Image



Component Detail

Recommendations:

Repair Notes

Type of Defect Found:

Corrective Action Taken:

Signature:

Date: